

# K11 Art Mall Shanghai

By Kokaistudios



Location: Shanghai, China

Surface: 35,500.0 sqm

Year of Completion:  
2013

Green Solutions Used:  
-Living vertical gardens  
-Automatic inductor system  
-Natural light。

## BACKGROUND

This K11 project, embodying its core brand values of “Art, People and Nature” creates new scenarios to the city’s commercial heart. Early in 2013, the project was awarded “Core and Shell LEED Gold Certification for Existing Buildings”

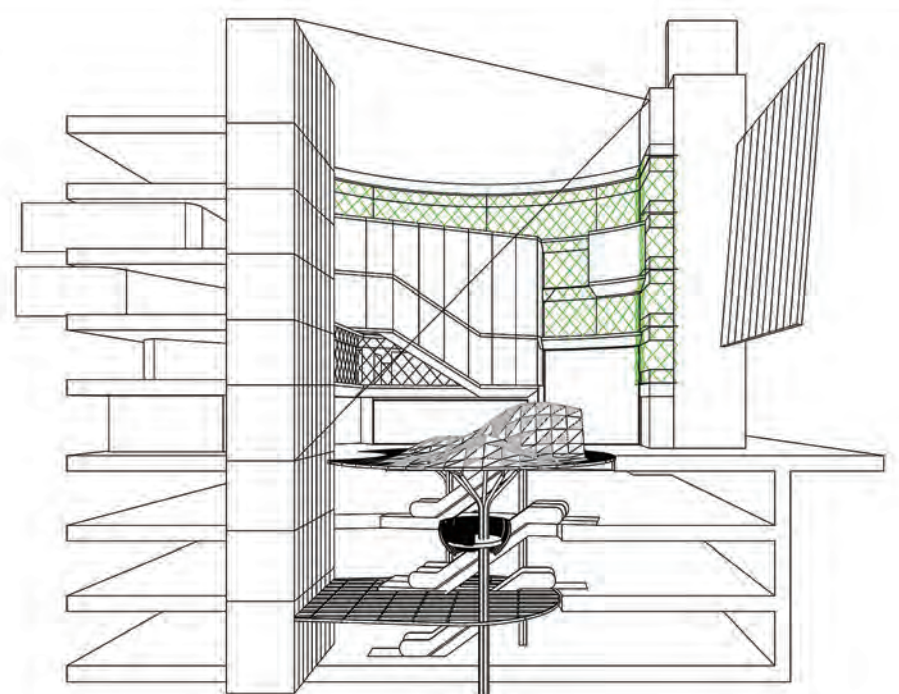
The strong visual integration throughout the six floors of the mall is achieved through the opening of an underground double height atrium at the center of the courtyard, accessible from above through a 280 sqm free-form glass skylight.



## GREEN SOLUTION

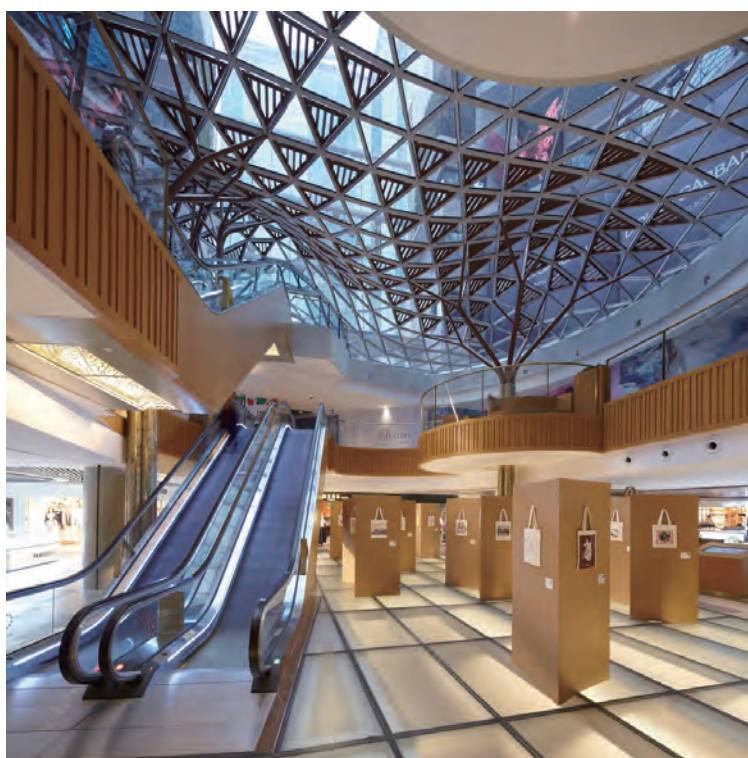
The inner courtyard featuring the nine floors’ height waterfall, the tallest outdoor waterfall in Asia, runs in an automatic inductor system where the water consumption is optimized depending on the climactic conditions and also features an extensive areas of over 2,000 sqm of living vertical gardens which collect rainwater that is then re-used in other areas of the project including the buildings cooling systems.

Natural light reaches the innermost parts of the mall during daytime through the glass floor of basement 2 atrium. At night, it’s the artificial light from below providing a diffuse glow to the floors above.



## ACHIEVEMENT

The project was awarded the “Core and Shell LEED Gold Certification for Existing Buildings”. Different strategies have informed Kokaistudios design in order to increase energy performance, reduce the “heat island effect” and water usage, improve the quality of the material chosen and the public transport accessibility.



Design Team: Andrea Destefanis, Filippo Gabbiani, Pietro Peyron, Li Wei, Carmen Lee, Wang Yun, Coco Cheng

Local Architect: Tong Ji Architecture Design Research Institute

Leed Consultant: Arup

Landscape Design: Hassell

Facade Consultant: KWP+SEELE

Light Consultant: Isometrix

Water Feature: Harmonic Environments, Inc.

Mep Consultant: AECOM

Client: New World Development

MAKE YOUR BUILDING GREENER, CONTACT Seeder TODAY!

info@seeder.cc