

Henkel Asia-Pacific and China

By HPP Hentrich-Petschnigg

Location: Shanghai, China

Surface: 22,100 sqm

Year of Completion:
2007

Green Solutions Used:

- Heat-insulating glass
- Thermally decoupled window frames
- Exterior sun protection
- Local materials



BACKGROUND

Henkel AG & Co. KGaA's headquarters for Asia-Pacific & China was completed in summer 2007. The building is located in Pudong, Shanghai's booming economic center on the east bank of the Huangpu River. The new administration and research center stands in a new industrial zone. It's basic form represents an asymmetrical curving U.

Environmental compatibility and sustainability were the key guiding principles. Facing south, the U shape creates a focal point in the center. It becomes a green courtyard for offices and labs around. Double glazing on the façade is coated with colored film in shades of light green and white. The colour draws inspiration from the blossoms of the magnolia. The same concept continuously appears through the courtyard, atrium lobby and staff canteen.

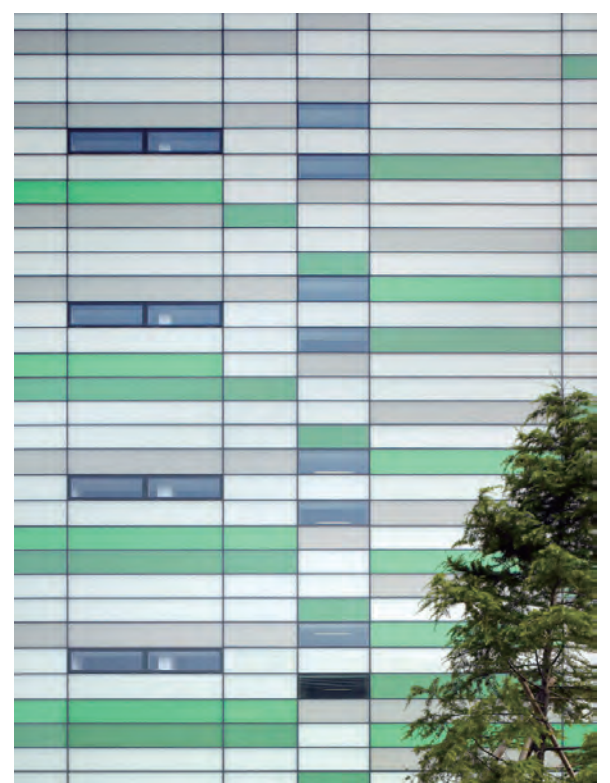


GREEN SOLUTION

The building is constructed with steel and an earthquake-proof concrete framework. The design uses traditional **local building materials**, including bamboo, granite and gravel embedded in mortar.

The façade was built as a continuous, all-glass curtain wall with an elemental construction system in order to **meet the western standards** on construction of an energy-efficient building.

By using **heat-insulating glass** and **thermally decoupled window frames**, energy consumption of the building was lowered by a total of **40%** in comparison with the regional average.



Architects: HPP Hentrich-Petschnigg

Location: Shanghai, China

Client: Henkel Company Limited

Area: 22,100 sqm

Year: 2007

Photographs: H.G. Esch

All text and images from Archdaily
<http://www.archdaily.com/375583/henkel-asia-pacific-and-china-hpp-hentrich-petschnigg/>

MAKE YOUR BUILDING GREENER, CONTACT *Seeder* TODAY!

info@seeder.cc

